

Induction heating system that is an intelligent solution for speeding up and simplifying the removal of glued (windows, rear windows, plastic parts, stickers, glass roofs, interior and exterior trims, etc.) or blocked (bolts, bearings, gears, etc.) parts from vehicles as well as for repairing hail dent. It is particularly suitable for vehicle bodies, and guarantees greatly reduced intervention times. It adjusts its intensity in an intelligent and completely automatic manner (Smart Power) using an innovative AutoCheck microprocessor system. Using the principle of electromagnetic induction, it can transfer a large amount of heat to a specific area (Smart Protection) in just a few seconds. In this way it does not damage glass, rubber, plastic and painted surfaces in the area being worked on, or even in the surrounding areas. For maximum practicality and operator safety, it activates automatically (Smart Activation) near the area in which it has to work. Characteristics: intelligent control with Autocheck system \* user-friendly digital panel \* automatic and manual mode \* activation and correct operation signals \* pushbutton control for glass remover and confined-space remover \* foot control. Supplied complete with glass remover, pad inductor, metal releaser and levers. Optional: confined-space remover and wonder pen.



**AUTOMOTIVE**

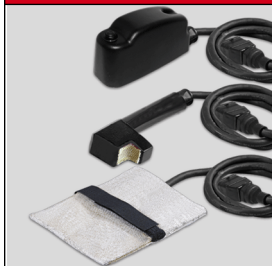


**REVOLUTIONARY!**

**To Remove & Repair parts without preparation time and work**



**3 ACCESSORIES INCLUDED**



**EASY REMOVAL OF GLASS**



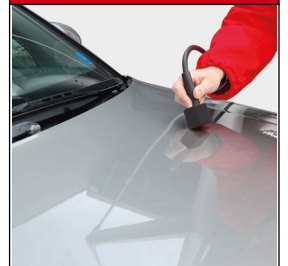
**REMOVES BLOCKED OR RUSTY PARTS**



**REMOVAL OF GRAPHICS AND GLUED PARTS**



**EASY REPAIR OF HAIL DENTS**



Norms:		LVD: EN 60519-1,3	EMC: EN 55011	EMC: EN 61000-6-2	EMC: EN 61000-3-2,3				
CODE	V <sub>ph</sub>	P <sub>MAX</sub>	F	P	IP	W <sub>H</sub>	kg	BAR CODE	pz/pallet
	V50/60Hz	kw	kHz	kw		cm(L,W,H)			
835010	200÷240	2,4	35 ÷ 100	2,3	IP21	39 26 23	10,3	8004897873 03 9	18
pz/pallet - B									
12									